

2/21 Waiwera Street Lavender Bay NSW

2  1 

Only 100 metres to McMahon's Point village cafe society, this stylishly revamped apartment is top floor in Claro, a recently revamped c1920s security block. This stylishly renovated apartment maximises its enviable position with a bank of north facing windows and an ultra-central cosmopolitan address in the coveted harbourside enclave of Lavender Bay. An easy stroll to both the Ferry wharf and North Sydney rail, its nestled between elegant McMahon's Point village.

View : <https://www.mcmahonspointrealestate.com.au/lease/nsw/north-shore-lower/lavender-bay/residential/apartment/7897981>

Features include:

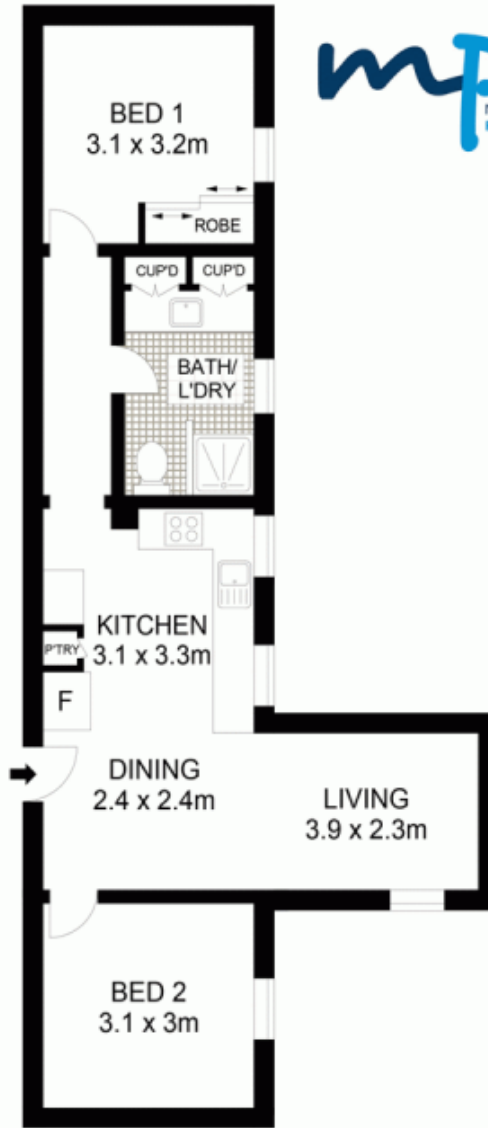
- Spacious living with designated dining under soaring ceilings and timber floors
- Striking contemporary gas kitchen with dishwasher and chic subway tiles
- Two generously sized bedrooms at opposite ends, main complete with built-ins



Susan Chen
02 9923 2611



Amanda Stewart
02 9923 2611



FIRST FLOOR



2/21 Waiwera Street, Lavender Bay

Scale in metres. Indicative only. Dimensions are approximate. All information contained herein is gathered from sources we believe to be reliable. However we cannot guarantee its accuracy and interested persons should rely on their own enquiries.

