



710/2-10 Mount Street North Sydney NSW

1  1  1 

A tranquil oasis of quality and style footsteps to the heart of North Sydney's bustling CBD. This generous security access apartment has 90sqm on title and is a peaceful and private haven or easycare entertainer with spectacular Harbour and city vistas from dawn to dusk. Set on Level 7 of this award-winning contemporary building, this skyline retreat captures a stunning 180-degree panorama stretching from the iconic arch of the Bridge and City skyline round to the Anzac Bridge and distant Blue Mountains. Set in a tree-lined avenue, it's an easycare home or ready-to-rent investment just footsteps to cafes, eateries, Greenwood Plaza, rail, buses & business, close to waterfront parks, leisure facilities & top schools and just minutes to the City.

Type : Apartment
Building Size : 90 sqm
View : <https://www.mcmahonspointrealestate.com.au/sale/nsw/north-shore-lower/north-sydney/residential/apartment/7806253>

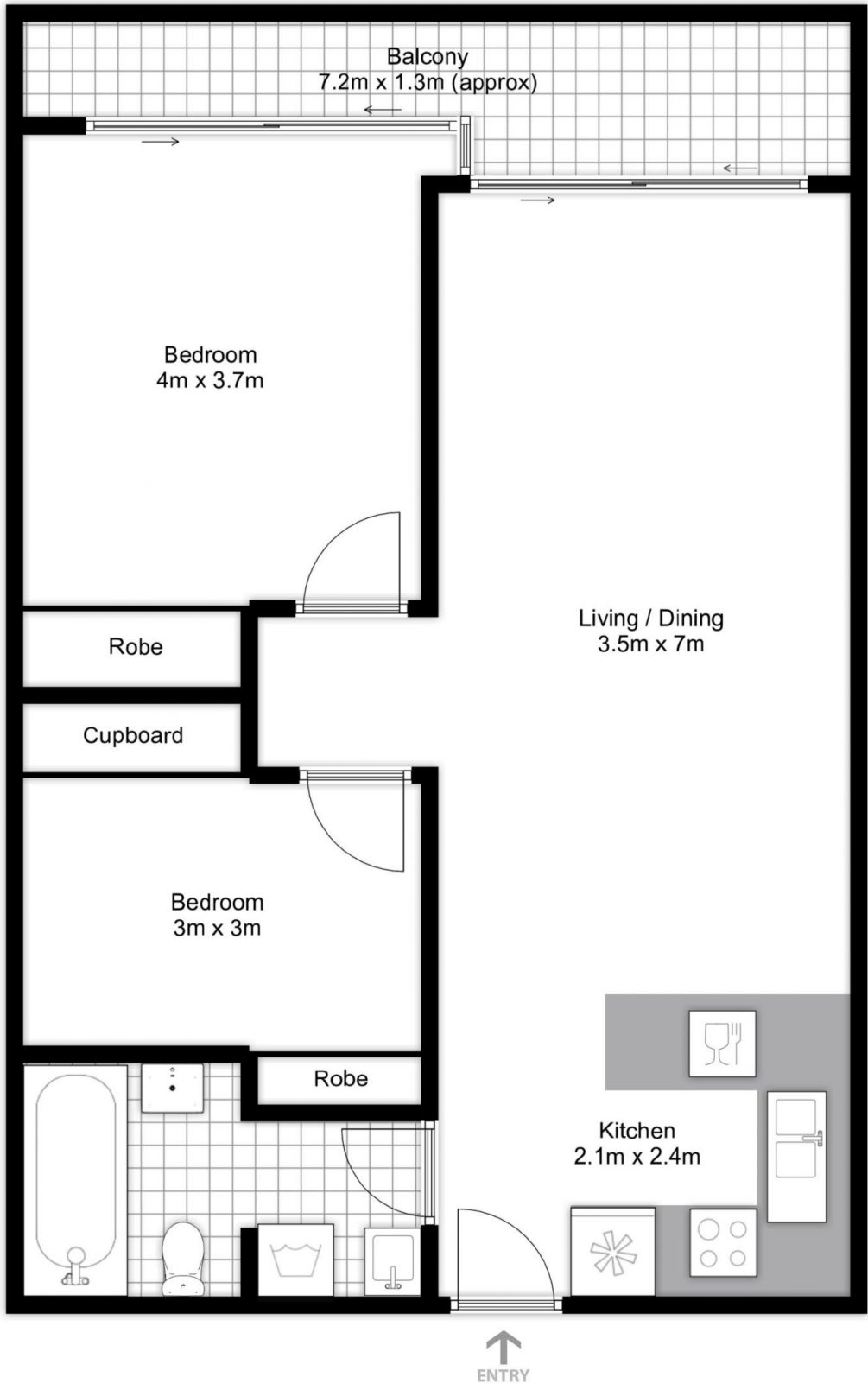


Craig Litchfield
02 9923 2611



Karina Kong
02 9923 2611

[For full version visit the website](https://www.mcmahonspointrealestate.com.au)



mcmahons point
REAL ESTATE

710/2-10 Mount Street, North Sydney

Floorplan shown is for presentation purposes and is not part of any legal document or title.
All measurements and figures are approximate. Interested parties should make their own enquiries.